

MA5

recessed



TUBO Collection

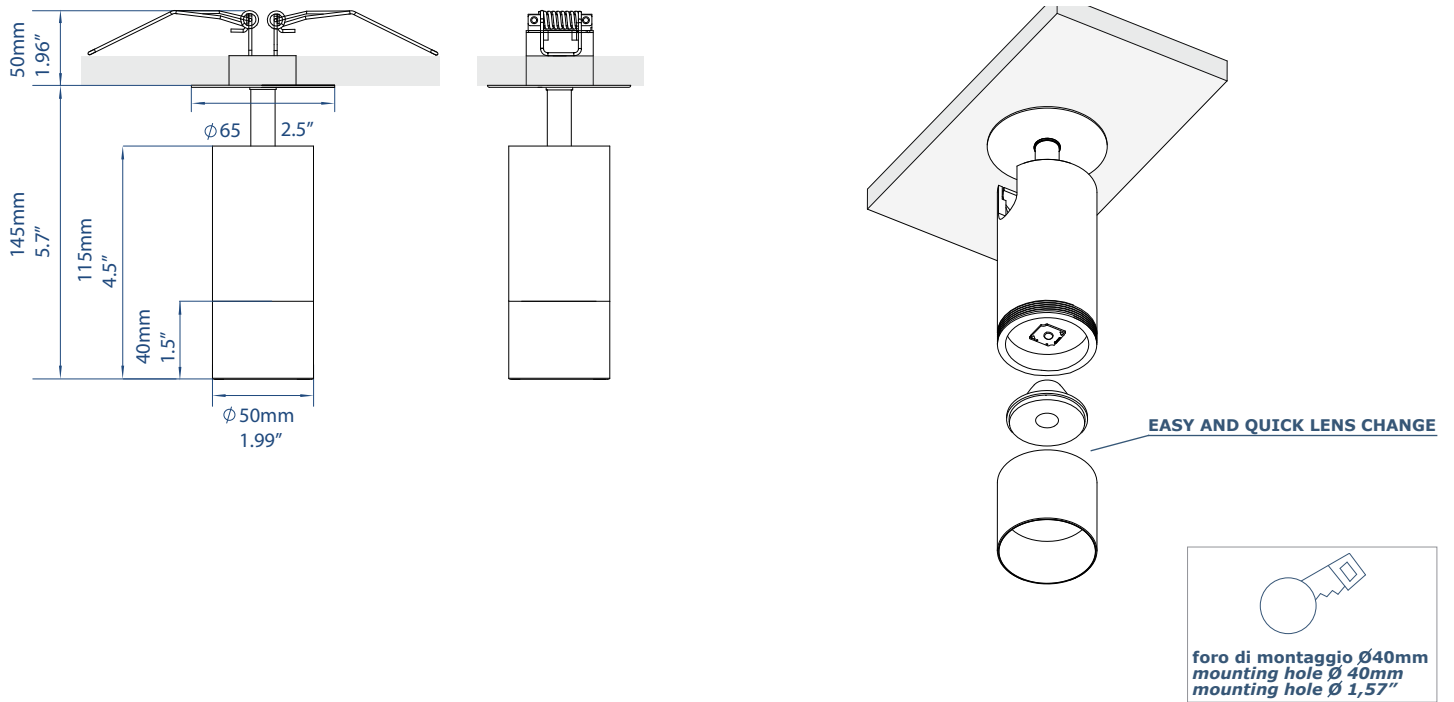
One spot, Infinity Configurations

La Collezione Tubo è una linea di prodotti nata per creare infiniti dettagli di design e differenti scenari luminosi, grazie al semplice processo di variazione del fascio luminoso. Disponibile in diverse dimensioni, tipologie di installazione e arricchita da una vasta gamma di finiture, la Collezione Tubo è progettata per adattarsi a ogni spazio e stile, offrendo infinite possibilità di personalizzazione. Questa collezione rappresenta un'armonia perfetta tra design e funzionalità, ideale per illuminare i più prestigiosi spazi di design.

info@turnlights.it / turnlights.com

The Tubo Collection is a range of products designed to offer endless possibilities for customisation. Thanks to a simple process that varies the light beam, users can create infinite design details and different lighting scenarios. Available in a variety of sizes, types of installation and finishes, the Tubo Collection is designed to adapt to every space and style. This collection represents a perfect harmony between design and functionality, making it ideal for illuminating the most prestigious design spaces.

MADE IN ITALY



CARATTERISTICHE / FEATURES

tipo di installazione <i>type of installation</i>	semi incasso <i>semi-recessed</i>
materiali <i>materials</i>	corpo in alluminio, lente in PMMA efficienza ≈90% <i>aluminium profile, PMMA lens efficiency ≈90%</i>
dimensioni complessive <i>overall dimensions</i>	37x145mm / 2.5"x5.7"
peso <i>weight</i>	380g
fascio <i>beam angle</i>	16° / 24°
finiture <i>finishes</i>	vasta gamma di finiture disponibili a catalogo <i>the catalogue has a wide range of finishes</i>



TRANSPORT CONDITIONS: Ambient temperature 0°C - +35°C; Relative Humidity 5% - 70% Rh.
STORAGE CONDITIONS: 0°C - 40°C; Humidity relative 5%-70% Rh, No dew, No Water spray. Recommended storage Temp is: 25°C with Humidity <65% Rh.
OPERATIONAL ENVIRONMENTAL CONDITIONS: Ambient temp : +5°C - 35°C Relative Humidity : 20% - 75% Rh

il materiale non può essere modificato, copiato, riprodotto o trasferito, né utilizzato in maniera impropria / the material can not be modified, copied, reproduced or transferred neither used improperly

info@turnlights.it / turnlights.com

REVISIONE / REVISION 07/2025
 soggetto a modifiche senza preavviso
 subject to change without prior notice

SPECIFICHE ELETTRICHE / ELECTRICAL DATA

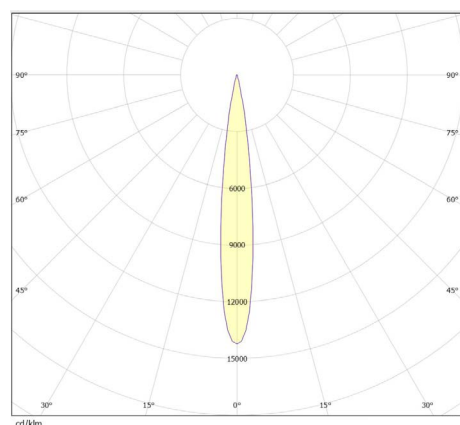
Volt voltage	max 350mA / 36Volt Option: 24volt dc/dc converter 36Volt-250mA
dimmerazione dimming	sì, a richiesta yes, on request

SORGENTE LUMINOSA / LIGHT SOURCE

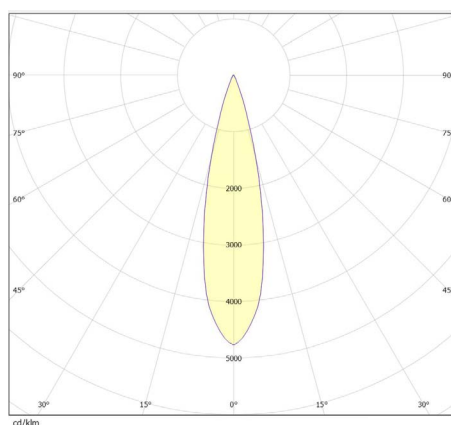
tipo di fonte type of source	COB LED Hi CRI> 98
potenza power	13W max
flusso luminoso luminous flux	1004lm
intensità peak intensity	
temperatura di colore color temperature	2700K / 3000K / 3500K / 4000K / 5000K CRI>98 su richiesta 2200K / 5000K CRI>90 on request 2200K / 5000K CRI>90
fidelity index (Rf)	>98
gamut index (Rg)	>101,7
selezione cromatica chromatic selection	MAC-ADAM 1Step
lifetime	>50 000h Flusso>70% >50 000h Flux>70%

MISURAZIONI FOTOMETRICHE / PHOTOMETRIC MEASUREMENTS

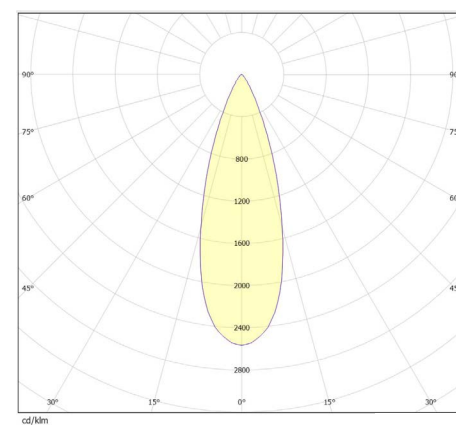
FASCIO STRETTO / NARROW BEAM 16°



FASCIO MEDIO / MEDIUM BEAM 24°



FASCIO LARGO / WIDE BEAM 36°



CERTIFICAZIONI / CERTIFICATIONS

IP 20 CLASSE II CEI 34-21



TRANSPORT CONDITIONS: Ambient temperature 0°C - +35°C; Relative Humidity 5% - 70% Rh.
STORAGE CONDITIONS: 0°C - 40°C; Humidity relative 5%-70% Rh, No dew, No Water spray. Recommended storage Temp is: 25°C with Humidity <65% Rh.
OPERATIONAL ENVOIRONMENTAL CONDITIONS: Ambient temp : +5°C - 35°C Relative Humidity : 20% - 75% Rh

il materiale non può essere modificato, copiato, riprodotto o trasferito, né utilizzato in maniera impropria / the material can not be modified, copied, reproduced or transferred neither used improperly

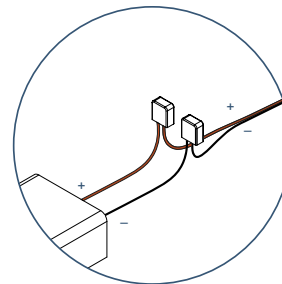
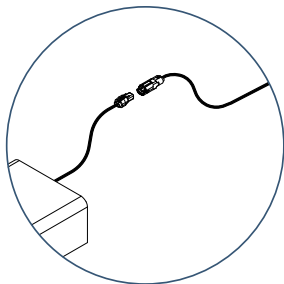
info@turnlights.it / turnlights.com

REVISIONE / REVISION 07/2025
soggetto a modifiche senza preavviso
subject to change without prior notice

ACCESSORI / ACCESSORIES

Micro connettore M/F antistrappo - 28xØ9mm - 24Volt
Micro plug connector M/F tearproof - 28xØ9mm - 24Volt

Collegamento a raccordo fisso
Hardwire connection

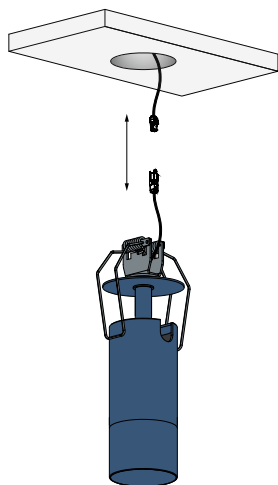


Drivers
(standard driver 24 Volt / DALI / 1-10V / DMX/RMX)

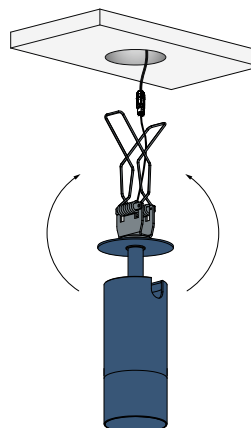
lep / lep DALI
(USA only)

INDICAZIONI INSTALLAZIONE / INSTALLATION DIRECTIONS

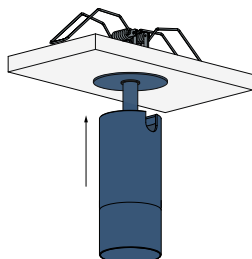
1_ CONNETTI I PLUG
1_ CONNECT THE PLUG



2_ ALZA LE MOLLE PER INSERIRLE
2_ LIFT THE SPRINGS TO INSERT THEM



3_ POSIZIONA LO SPOT
3_ PLACE THE SPOT



4_ CAMBIA SCENARIO LUMINOSO GRAZIE AL CAMBIO LENTE FACILE E RAPIDO
4_ CHANGE LIGHT SCENARIO THANKS TO THE EASY AND QUICK LENS CHANGE

