

BOSCO



INDEX

Specifications	2
Options	2
Ledmodules	3
Drawings	4
Durability classes	5
CO2-storage	6
Downloads	6



SPECIFICATIONS

- **IP class:** IP54
- **Voltage:** 230 volt
- **Power per LED module:** 2.4 Watt
- **Lumen output per LED module:**
 - 2.200K = 109 lm
 - 2.700K = 121 lm
 - 4.000K = 153 lm
 - amber = 47 lm
- **Beam angle:** 155x65 degrees.
- **LED lifetime:** >100.000 H (L90,B10)
- **Lighting data:** LDT. / IES. Files available for download at www.timberlab-solutions.com or in the Dialux Library: <https://silver.dialux.com/timberlab>
- **BUG Rating:** B0, U0, G0
- **CE - Conformity mark**
- **Packaging:**

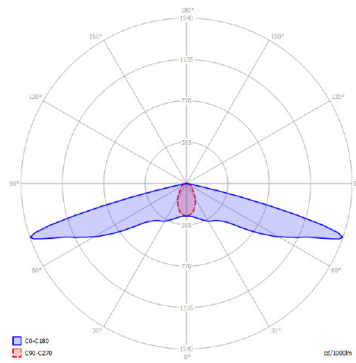
Pallet dimensions (L x W x H) :	1300 x 800 x 1500
Pack Quantity :	28
Pallet weight (KG) :	850

OPTIONS

- **Wood type:** Chestnut
- **Certification:** PEFC
- **Light colour:** 2.200K, 2.700K, 4.000K, 3.000K/amber and amber (593nm).
- **Connection:** Possible with cable or without cable (1mtr 3 x 1.5mm²). A 32mm hole in the fixture as standard for easy passage for your ground cable.
- **DALI Control**
- **Connection box**
- **Powder coated post support**
 - **Dynamic motion sensor**
- **Variations:** At Timberlab, every fixture is carefully produced for you. In addition to the standard options, we are happy to help create variations for your application. Feel free to reach out to our project advisors with any inquiries at www.timberlab-solutions.com.

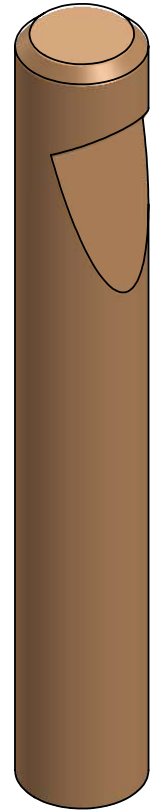
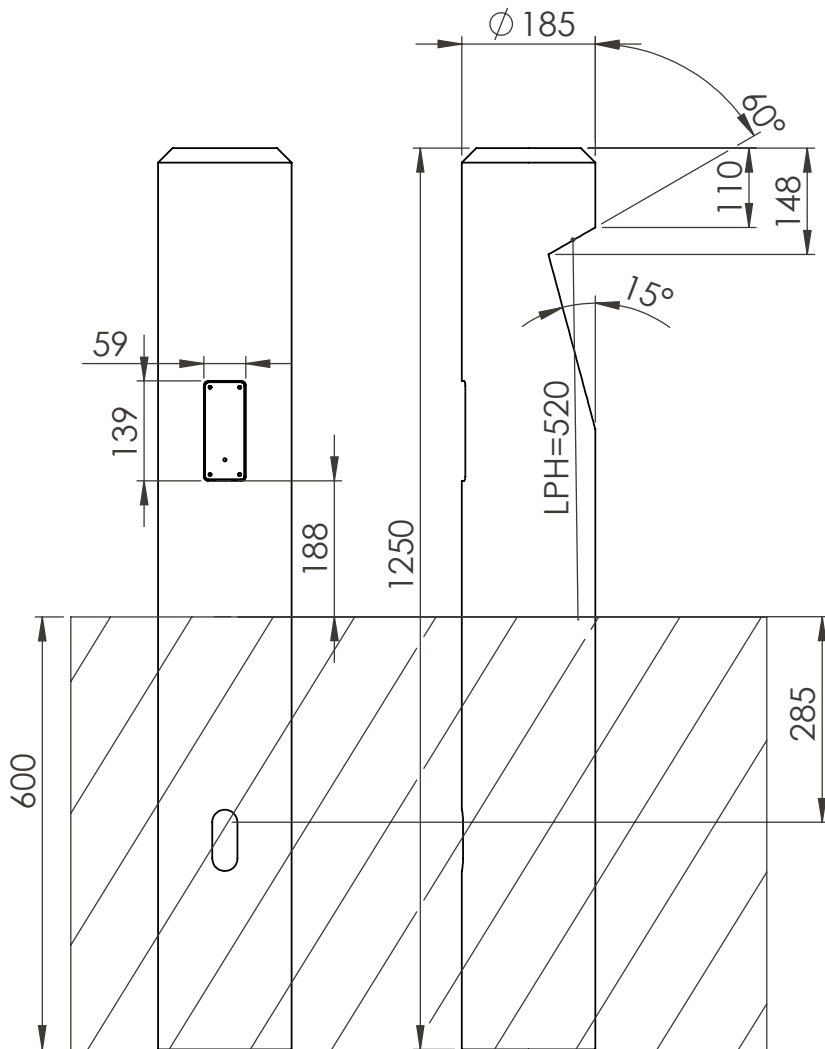


LEDMODULES



	TBL path light module 2.200K	TBL path light module 2.700K	TBL path light module 4.000K	TBL path light module AMBER 593 nm
Spanning (optie)	230 VAC 12-24VAC/DC	230 VAC 12-24VAC/DC	230 VAC 12-24VAC/DC	230 VAC 12-24VAC/DC
Vermogen	2.4W*	2.4 W*	2.4W*	2.1W*
Power factor	0.36*	0.36*	0.36*	0.34*
Lumen output	109 lm*	121 lm*	153 lm*	47 lm*
Efficientie	45 lm/W*	50 lm/W*	63 lm/W*	23 lm/W*
Lichtkleur	2200K 2335K*	Warm Wit 2700K 2654K*	Natuurlijk Wit 4000K 3801K*	AMBER x=0.5977 y=0.3996.*
CRI	84*	84*	72*	n.v.t.
Dimbaar	op aanvraag	op aanvraag	op aanvraag	op aanvraag
Label	A+	A+	A+	B
Bescherming	IP 54	IP 54	IP 54	IP 54
Stralingshoek	156x64*	156x64*	154x65*	151x58*
Aantal LEDs per module	1	1	1	1
Bedrijfs temperatuur	-20...+50°C	-20...+50°C	-20...+50°C	-20...+50°C
Verwachte levensduur	100.000 uur	100.000 uur	100.000 uur	100.000 uur

* Gemeten waarden



timberlab

Timberlab B.V. - Harskamperweg 32 - 6731AB Otterlo
The Netherlands T +31 (0)318 943617 -

TITLE: BOSCO ingr

FILE: Production drawing

REVISION A 31-10-2024

Drawn by:
DR

Checked by:
TvD

MATERIAL:
Kastanje

A4

Scale: 1:10

SHEET 1 OF 1



The mark of responsible forestry

FSC®

The Forest Stewardship Council (FSC) is an international organization dedicated to global conservation and responsible forest management. FSC defines responsible forest management as the balanced consideration of ecological, social, and economic aspects associated with forestry.



PEFC™

PEFC is an international certification mark that guarantees wood and paper products originate from sustainably managed forests, ensuring the preservation of forest areas.

DURABILITY CLASSES

Class	Lifespan	Wood species
I	>25 years	Accoya*, cumaru
II	15 – 25 years	Chestnut, oak
III	10 – 15 years	Douglas fir
IV	5 – 10 years	
V	< 5 years	

* Accoya is guaranteed to last for over 50 years above ground and 25 years in ground or freshwater. For more information, visit www.accoya.com.



C02-Storage

	Bosco	
Chestnut	Weight	C02
	20 kg	32 kg

DOWNLOADS

For more information, visit <https://timberlab-solutions.com/> where you can find a manual, 3Ds file, and create a lighting plan with our Light Calculator.

The documents that can be downloaded are:

- Datasheet Smart Motion Sensor
- Manual

Other links are:

- Specification text
- Lighting plan

Disclaimer

The information presented in this datasheet is carefully compiled by Timberlab with care and attention. Nevertheless, it is possible that the information published in the datasheet is incomplete and/or incorrect.