

dry location rated recessed or fully concealed light fitting for indoor use. made of an powder coated and oxidised aluminium body with a frontal opening and a step beam of light effect.

versions:

raggio incasso halo 40x170x300mm/1.6x6.7x11.8'' for installation in plasterboard and brickwork using the appropriate housing, with 120V 50-60Hz transformer included or excluded, to be installed remotely,

raggio incasso led 40x170x300mm/1.6x6.7x11.8'' for installation in plasterboard and brickwork using the appropriate housing, wired with 3000K led source 1.5W 104lm with 120V 50-60Hz power supply included or not included, to be installed remotely. accessories: frame, lid extraction key.

finishes: White or custom upon request

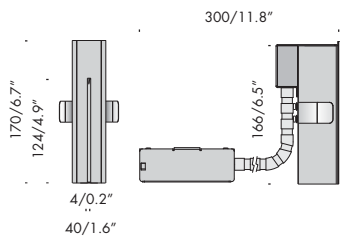
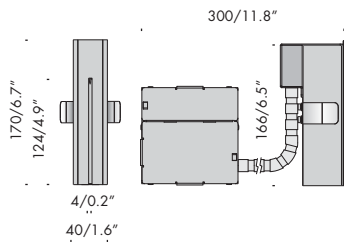


preferred  
**DARK**  
TOOL

Consider using a larger remote driver 500ma max 10 fixtures when doing installations of more than 3 units. This allows for a class2 installation.

Please note this is meant to be installed flush to surface of floor or wall and is not a traditional steplight

Custom colors available upon request



**raggio recessed led** 120V 50-60Hz **A** dry

**f6.118.12.t.1** bianco V 3000K 0,5kg  
1.2lb

Ra	ies tm-30		sdc	mA	V <sub>f</sub> (min)	lm	W	lm/W	
90	Rf 90	Rg 100	step 2	500	2,9	104	1,5	69	<b>A++</b>
ca001	les2	Ta25 °C		vita media · average life		50000 h	L80	B10	

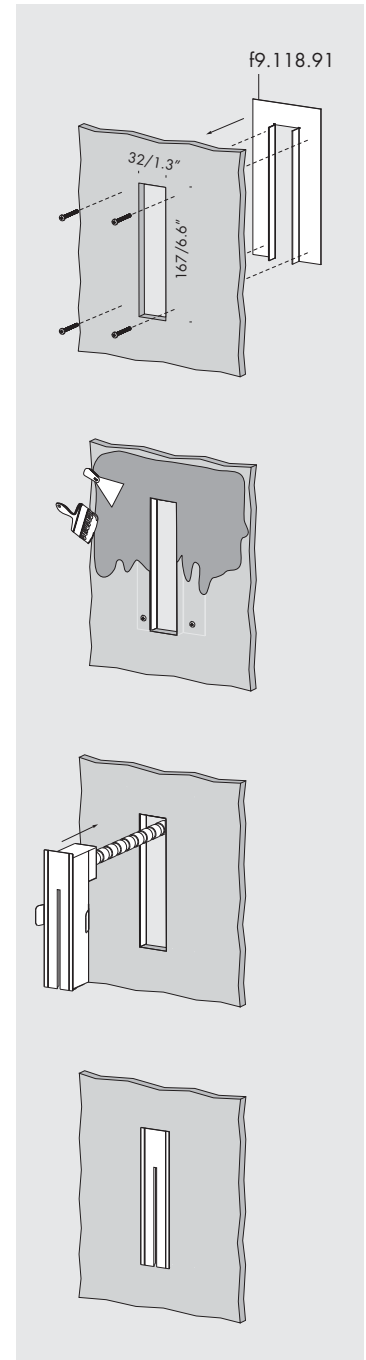
120v driver included

**raggio recessed led** 500mA **A** dry

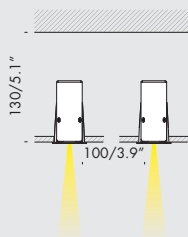
**f6.118.12.u.1** bianco V 3000K 0,3kg  
0.8lb

Ra	ies tm-30		sdc	mA	V <sub>f</sub> (min)	lm	W	lm/W	
90	Rf 90	Rg 100	step 2	500	2,9	104	1,5	69	<b>A++</b>
ca001	les2	Ta25 °C		vita media · average life		50000 h	L80	B10	

This is a class 2 remote driver model

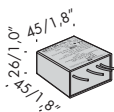
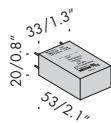
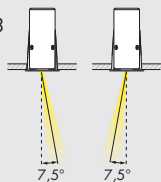


distanza minima  
minimum distance



gradi di rotazione  
rotation degrees

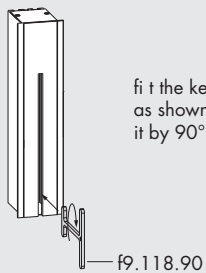
f6.118.51/53



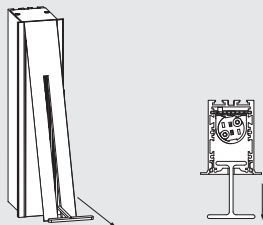
trasformatore. transformer	120V 50-60Hz	T	dry	UL US
f6.004.13	12V		60W	0,4kg 0.6lb

alimentatori. power supplies.	120-277V 50-60Hz	A	damp	UL US
t4.306.u	500mA		2÷13V	0,09kg 0.2lb

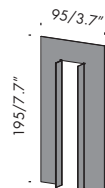
fit the key into the lock  
as shown in figure, turn  
it by 90° and pull



f9.118.90



estrarre il coperchio  
take out the lid



accessori. accessories.

f9.118.90 chiave estrazione coperchio · lid extraction key 0,01kg  
0.02

f9.118.91 mascherina · frame 0,02kg  
0,05lb

