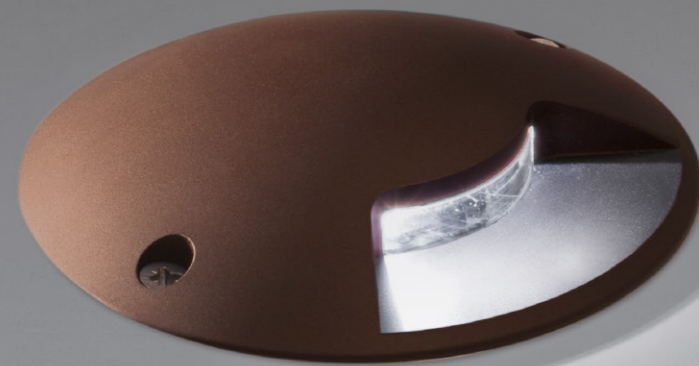


AGENA

SPECIFICATIONS

base code	67005 AGENA 1 - 67006 AGENA 2 - 67008 AGENA 180
typology	Inground grazing luminaire with a drive over load of 2 tonnes / 4000 lbs. One light sector 90° (AGENA 1), two light sectors 90° (AGENA 2), one light sector 180° (AGENA 180)
mounting	Inground using PVC housing box (code 69307) to be separately ordered as accessory
diameter	99 mm / 3.90"
height	50 mm / 1.97"
required depth	100 mm / 3.94"
first fit requirement	Yes, separate housing box (code 69307)
floor cut out	90 mm / 3.54"
construction	Fixture: turning and milling aluminum or stainless steel AISI 316L. A2 stainless steel screws. Enclosure in PMMA complete with silicone gasket. PVC housing box
finishes	Anodized, polished stainless steel AISI 316L or powder coated when painted
ingress protection	IP67. Built-in protection from water infiltration and moisture
lamp type	Power LED. Remote power supply not included
lamp wattage	3W at 48V DC. North America 24V DC
lamp lumens	2700K CRI93 - 180lm, 3000K CRI93 - 210lm, 4000K CRI93 - 225lm
delivered lumens	31lm (AGENA 2, 3000K CRI93)
lumen maintenance	50.000h L90
kelvin	2700K CRI93, 3000K CRI93 and 4000K CRI93 / 3 step MacAdam ellipse
special features	Built-in unpolarized electronic system, hot plug and electronic control of the operating temperature that guarantees that the fixture will last with ambient temperature up to 60° C / 140° F
dimming options	No. Only on specific request
standards	CE, UL 2108, CSA C22.2




AGENA 1



AGENA

ORDER CODE

BASE CODE	A . POWER SUPPLY	B . KELVIN	C . DIFFUSER	D . FINISHES	E . OTHER
67005 AGENA 1	8 48V DC EXCL. power supply	4 4000K CRI93	1 PMMA	1 grey anodized	
67006 AGENA 2		5 3000K CRI93		5 stainless steel	
67008 AGENA 180	R  listed 24V DC EXCL. power supply	8 2700K CRI93		F golden bronze	
				Q anthracite RAL 7024	
Example: BASE CODE 67005 A B C D E = 67005 8511					

ACCESSORIES

REQUIRED ACCESSORIES - NOT INCLUDED

code	description	dimensions mm
69307	housing box for concrete	Ø90xH100
		
	Power supply 48V DC* ON/OFF	
code	output power	input voltage / frequency IP dimensions mm
69180	30W	90-264V 47-63Hz IP20 L160xW46xH30
69181	40W	90-305V 47-63Hz IP67 L163xW43xH32
69182	60W	90-305V 47-63Hz IP67 L163xW43xH32
69187	100W	90-305V 47-63Hz IP67 L220xW68xH39
69188	150W	90-305V 47-63Hz IP67 L228xW68xH39
69189	240W	90-305V 47-63Hz IP67 L244xW68xH39
	Power supply 48V DC* ON/OFF for ambient temperature up to 60° C	
69185	40W	90-305V 47-63Hz IP67 L171xW62xH37
69186	60W	90-305V 47-63Hz IP67 L171xW62xH37
69187	100W	90-305V 47-63Hz IP67 L220xW68xH39
69188	150W	90-305V 47-63Hz IP67 L228xW68xH39
69189	240W	90-305V 47-63Hz IP67 L244xW68xH39
	Power supply 48V DC* DALI® for ambient temperature up to 60° C	
69195	75W	100-305V 47-63Hz IP67 L180xW63xH36
	Class 2 power supply 24V DC	
	Consult US distributor Lites on West T: 212.775.6363 E: info@litesonwest.com	
code	description	dimensions mm
69842	IP68 connector, 1 IN - 1 OUT, 2 wires	W37xD22xH37
69847	IP68 connector, 1 IN - 2 OUT, parallel wiring, 2 wires	W45xD30xH17
		
		

AGENA 180